

Digital Pulsewave Analysis



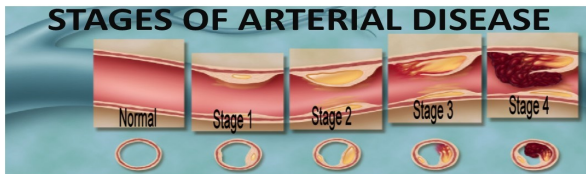
The Digital Pulsewave Analyzer (DPA) is a Health Canada approved device that measures the pulse waveform produced with each heartbeat.

Each time the heart beats, it sends a pulse wave down the arteries to your fingers and toes. This wave is then reflected back to the heart and is analyzed by the device.

Did You Know ?

The major cause of cardiovascular disease is the silent and steady build-up of fatty deposits in your arteries. This results in narrowed blood vessels which decrease the blood and oxygen delivered to your heart, brain and limbs. A heart attack or stroke can occur at any time and often without warning.

Which Stage Are You In ?



In just 6 minutes you will receive a printout that will answer this and more.

Near Infrared Light Therapy (N.I.R.)

N.I.R. Therapy decreases inflammation, decreases muscular pain, and increases wound healing.

Conditions that have been successfully treated with N.I.R. Therapy include:

- | | |
|----------------------|-------------------|
| Arthritis | Heel Spurs |
| Back/Neck Pain | Knee Injuries |
| Carpal Tunnel | Sciatica |
| Chronic Foot Wounds | Shoulder Injuries |
| Diabetic Skin Ulcers | Sports Injuries |
| Fibromyalgia | Tendonitis |



Conditions that have benefitted from our specialized services:

- | | |
|--------------------------|---------------------|
| ADD/ADHS | Hair Loss |
| Allergies | Headaches |
| Anxiety | Heart Conditions |
| Arthritis | Hormonal Imbalances |
| Blood Pressure | Low Energy |
| Blood Sugar Disorders | Migraines |
| Colds & Flu | Prostate Conditions |
| Chronic Fatigue Syndrome | Sinus Conditions |
| Digestive Disorders | Sleep Disorders |
| Eczema/Psoriasis | Stress |
| Fatigue | Thyroid Conditions |
| Fibromyalgia | Yeast Infections |

Even with my blood pressure and heart medication, I get short of breath and weak when I walk from my car to the mall doors. My legs feel heavy and the muscles start to burn. I wanted to see what the DPA Analysis would show. It showed that I had stage 3 clogging of my arteries. After three weeks of taking the cardio formula, it was easier to walk and I had more energy. Now at eight weeks, my breathing is better and I have almost no pain in my legs. At 75 years old, I feel like a new person! Thanks Dr. Fox. A.H.

When I turned 40 my digestive system changed for the worse. I continually had diarrhea no matter what I ate. This went on for 15 years, with little to no relief. The medical system had no answers for me. Then I heard a commercial for Centre and it changed my life. I came in, got tested, and began a specialized nutritional program to help heal the lining of my digestive system. I have also responded amazingly to biofeedback treatments. It's been 19 years since my first visit and I honestly believe that I wouldn't be here today without the knowledge and caring of Dr. Fox. D.W.

After suffering with multiple airborne and food allergies for years, my sensitivity has dropped 95% after only 3 Biofeedback treatments. Finally some relief! H.P.



Centre For
Alternative
Healing (Winnipeg)

(204) 255-9523

Whether you have a specific health problem or just want to improve your general well being, we have a number of options available to help.

www.althealing.ca

Certified Nutritional Testing (CRA)
Computerized Biofeedback Testing
Bioresonance Treatment
Digital Pulsewave Analysis (DPA)
Near Infrared Light Therapy (NIR)
Aromatherapy & Colour Therapy

C-1510 St. Mary's Road
Winnipeg, MB R2M 3V7

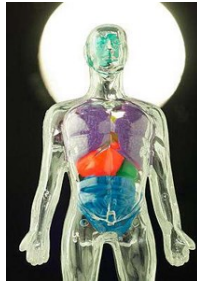
Helping Manitobans Improve
Their Health For Over 25 Years

Contact Reflex Analysis

Contact Reflex Analysis, also known as CRA, is a simple, safe, natural method of analyzing the body's nutritional needs. CRA is not a method of diagnosis. It is a means by which a practitioner uses the body's reflex points to accurately determine the root cause of a problem.

Many times the symptoms of a health problem are treated while the actual source of the problem continues to go undetected. For example, headaches are treated with aspirin, coughs are treated with cough medicine. If these symptoms persist, expensive tests are run and stronger medications are prescribed. But the question still remains. What's causing the headache? What's causing the cough?

There is hope. CRA is different. CRA quickly and accurately uncovers the root of the health problem and provides the practitioner with the answers for correcting it.



CRA is also a marvelous preventative technique used to find a problem before it becomes a full-blown health issue. Find it early and correct it.

How Does It Work ?

Hundreds of miles of nerves carry electrical energy and connect with every organ, gland, muscle and tissue. There are approximately 75 known reflex areas on the skin which represent various organs, glands and bone structures. It is believed that when the body becomes ill there is an interruption of nerve energy to these reflexes. The reflex, when tested, will act similar to a circuit breaker under overload.

To test a reflex the practitioner will use the patient's arm muscle (or any other muscle) as a 'circuit' indicator. When the practitioner contacts a healthy reflex point, the arm muscle will remain strong. Nerve energy is flowing freely. The practitioner will not be able to push the patient's arm down without exerting a lot of force.

However, if the arm muscle is suddenly weak and the practitioner can easily push the patient's arm down, a 'hot' circuit breaker has been located. The nerve energy has been interrupted. Using this reflex information, the practitioner will know if the problem is structural, physical or nutritional. When nutritional deficiencies are uncovered, specific designed clinical nutrition or nutraceuticals can be given to help the body heal.

What is Designed Clinical Nutrition ?

Designed clinical nutrition or Nutraceuticals, are precise formulations which have been developed to feed individual organs and tissues in the body. These nutritional products have a carrier protein which helps to deliver, in a high concentration, the specific formulas directly to the tissues.



This is why designed clinical nutrition is much more effective than over-the-counter vitamins, minerals, herbs and supplements which are distributed throughout the body and not directly to the targeted tissues and organs.

For years I was unable to bend my fingers because they were so swollen and painful with arthritis. After only 3 months on my CRA program I am pain free, my knuckles are no longer swollen and I can bend my fingers. The best part is that I can now wear my wedding ring again.. Thank you very much! V.M.

Aromatherapy & Colour Therapy



Aromatherapy is the practice of using the natural oils extracted from flowers, bark stems, leaves, roots or other parts of a plant to enhance psychological and physical well-being.

Colour Therapy can be used to balance energy wherever a person's body is lacking, whether on a physical, emotional, spiritual or mental level.

Biofeedback Testing & Bioresonance Treatment

What Is The EPIX/SCIO ?

Our biofeedback/bioresonance program uses the EPIX/SCIO system which is a state-of-the-art Evoked Potential Biofeedback System for stress detection and reduction.



During analysis, the EPIX/SCIO is connected to the body via a headband and limb straps. It then resonates with thousands of tissues, organs, nutrients, toxins and allergens for one-hundredth of a second each, and records the degree to which your body reacts.

What Does The EPIX/SCIO Actually Do ?

The EPIX/SCIO scans the client's body like a virus scan on a computer, looking for viruses, toxins, food sensitivities, hormone levels, allergies, deficiencies, weaknesses and abnormalities, to name a few.

It reports on the biological reactivity and resonance in your body and indicates needs, dysfunctions and vulnerabilities. The information provided is fundamentally different from that provided by x-rays, blood tests etc., because it tells us about the energetic state of your body and the direction in which your body is focusing its energy .

How Does The EPIX/SCIO Work ?

The EPIX/SCIO, after measuring the body's frequencies, feeds back its own frequencies to redress or neutralize destructive wave patterns. In some cases it may add frequency, in others, reverse it to either enhance or counteract the body's own resonances.

I went from specialist to specialist trying to get help for my migraines. Nothing ever gave me any relief until I found your clinic. Since taking the circulatory nutrition and having Biofeedback treatments I haven't had a migraine in 8 months. It's amazing! I wish I would have found you sooner. L.S.